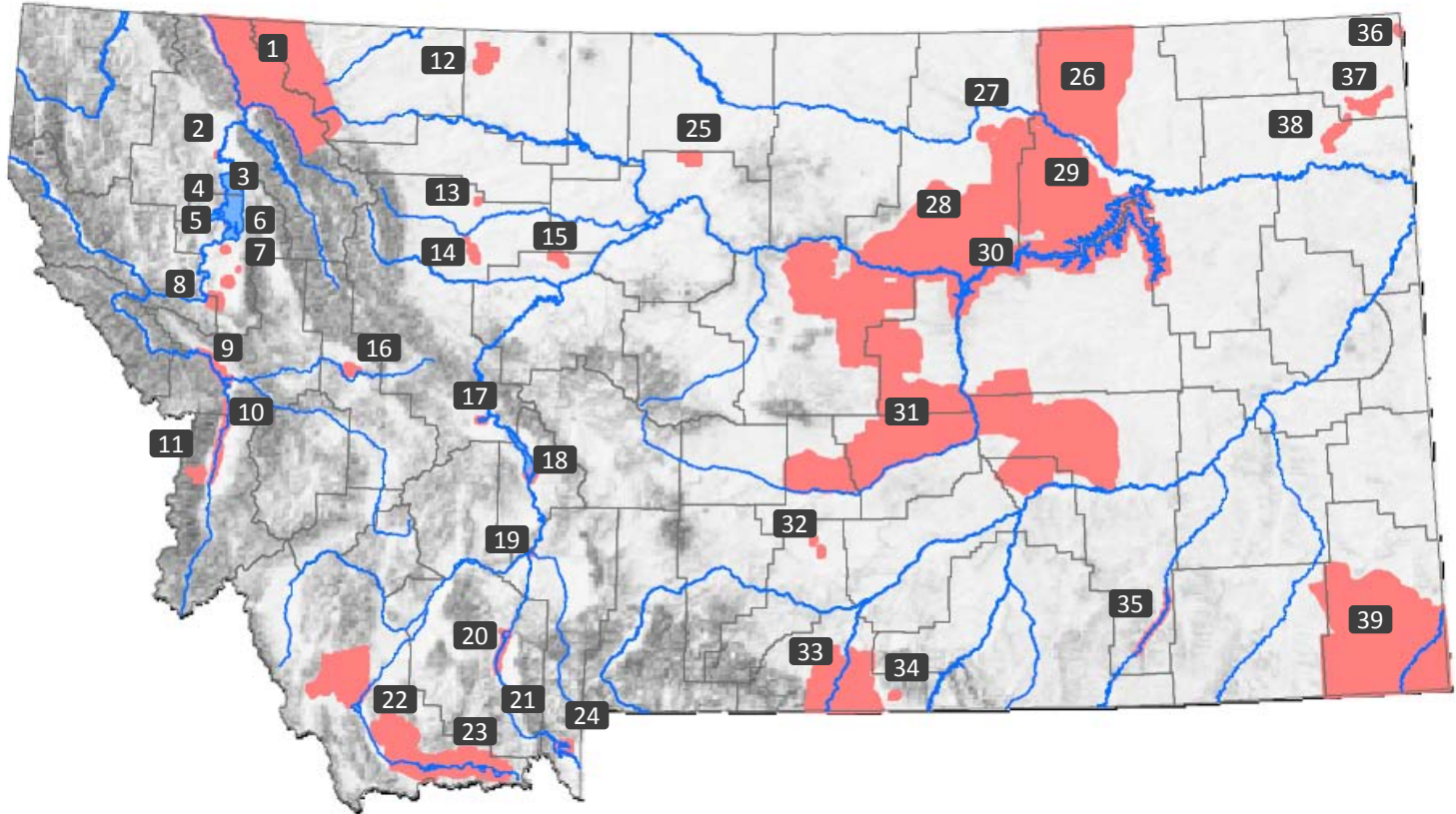


# Montana Important Bird Areas – IBAs – 2009

1. Glacier National Park
2. Owen Sowerine Natural Area
3. North Shore Flathead lake
4. Safe Harbor Marsh
5. Pablo National Wildlife Refuge
6. Ronan Hawk Roost
7. Ninepipes NWR-WMA
8. National Bison Range
9. Clark Fork River - Grass Valley
10. Bitterroot River
11. Blodgett Fire
12. Kevin Rim
13. Arod Lakes
14. Freezeout Lake
15. Benton Lake NWR
16. Blackfoot Valley
17. Lake Helena
18. Canyon Ferry WMA
19. Missouri Headwaters State Park
20. Madison Valley
21. Sun Ranch
22. Beaverhead Sage-steppe
23. Red Rocks NWR
24. Hebgen Lake
25. Lonesome Lake
26. North Valley Grasslands
27. Bowdoin NWR
28. Glaciated Prairie Sage-steppe
29. Little Beaver Creek
30. CMR and UL Bend NWRs
31. Mussellshell Sage-steppe
32. Halfbreed NWR
33. Bridger Sage-steppe
34. Bear Canyon
35. Tongue River
36. Westby Prairie-Wetland Complex
37. Medicine Lake NWR
38. Manning Lake Wetland Complex
39. Powder/Carbon Sage-steppe



For more information, see <http://mtaudubon.org/birds/areas.html> or contact Amy Cilimburg [amy@mtaudubon.org](mailto:amy@mtaudubon.org); 406-465-1141

