

Montana Saltcedar Team 2017 Project Summary

Float Treatment – August 28th to August 31st

- 50 river miles of the Missouri treated, from Wolf Point, MT to Brockton, MT.
- One 4 person MCC Crew from Bozeman, 8 volunteers ranging from the Centennial Valley to Kalispell.
- 148 hours of MCC crew time, and 298 hours of volunteer time, for a total of 444 hours of treatment over the course of the 4 day trip.
- Treatment took place in McCone, Roosevelt, and Richland counties, as well as on Fort Peck Indian Reservation land.
- Over 344 individual saltcedar plants treated within the high water mark.

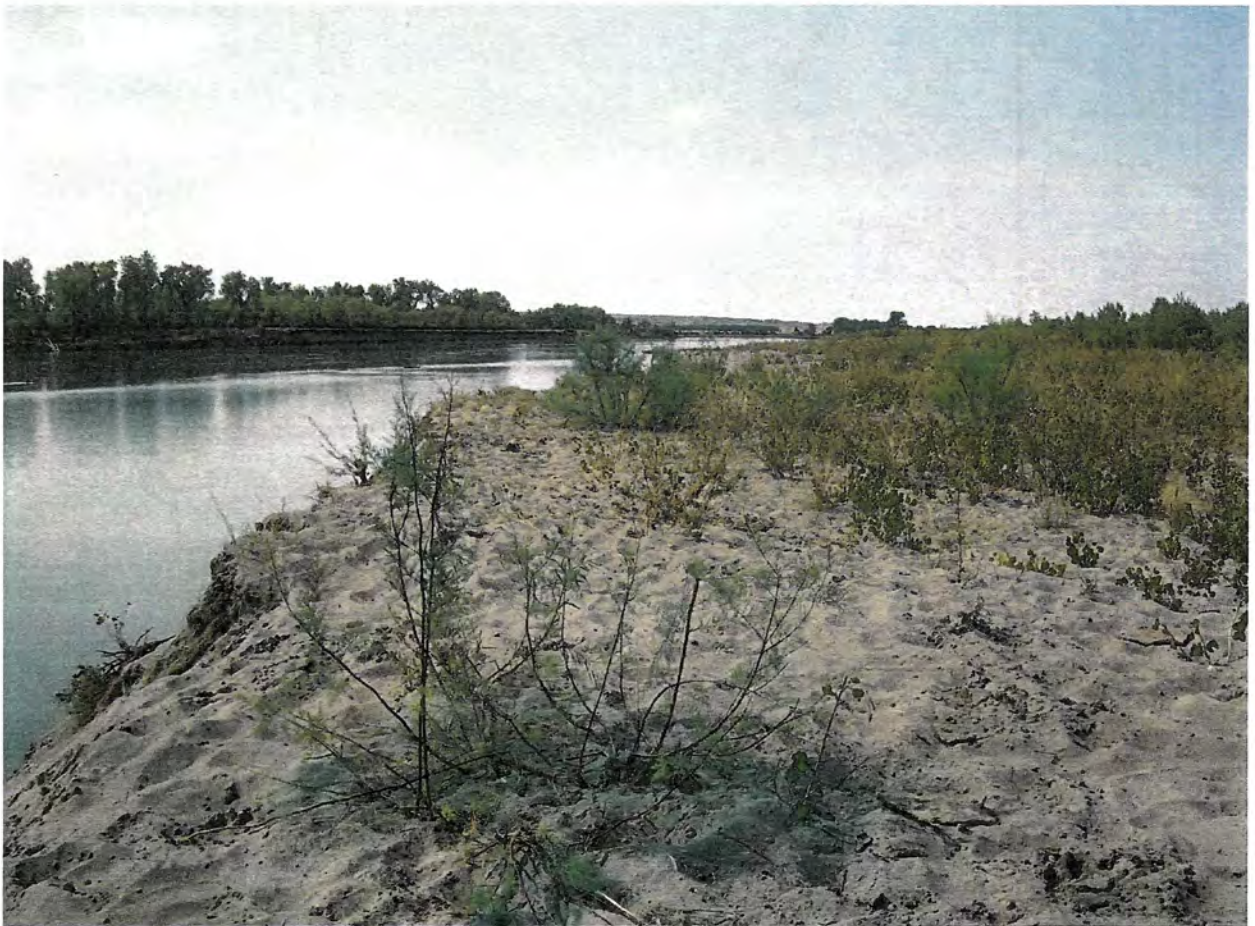
Secondary Treatment – October 3rd to October 6th

- 64 river miles of the Missouri treated from Brockton, MT to the North Dakota Border.
- 3 volunteers along with Dylan Brown of the Monture Creek Land Management, Inc.
- 53.5 hours of contractor time, and 160.5 hours of volunteer time, for a total of 214 hours of treatment over the course of the 4 day trip.
- Treatment took place in Roosevelt and Richland counties.
- Over 844 individual saltcedar plants treated within the high water mark.

Project Summary

- 114 river miles of the Missouri treated, from Wolf Point, MT to the North Dakota Border.
- 4 MCC crew members, 11 volunteers, 1 contractor.
- 148 hours of MCC crew time, 458.5 hours of volunteer time, and 53.5 hours of contractor time, for a total of 660 hours of treatment over the course of 8 days.
- Treatment took place in McCone, Roosevelt, and Richland counties, as well as on Fort Peck Indian Reservation land.
- Over 1,244 individual saltcedar plants treated within the high water mark.
- Treatment covered 15% of the Montana Missouri River and 5% of the total length of the Missouri River in the US.







Montana Saltcedar Team 2017 Treatment Map

