

2013
Black Swift Surveys
Glacier National Park



SITES SURVEYED

- 15 sites surveyed
 - 2 hour observation conducted at dusk at each site
 - Black Swifts observed at 6 sites
-

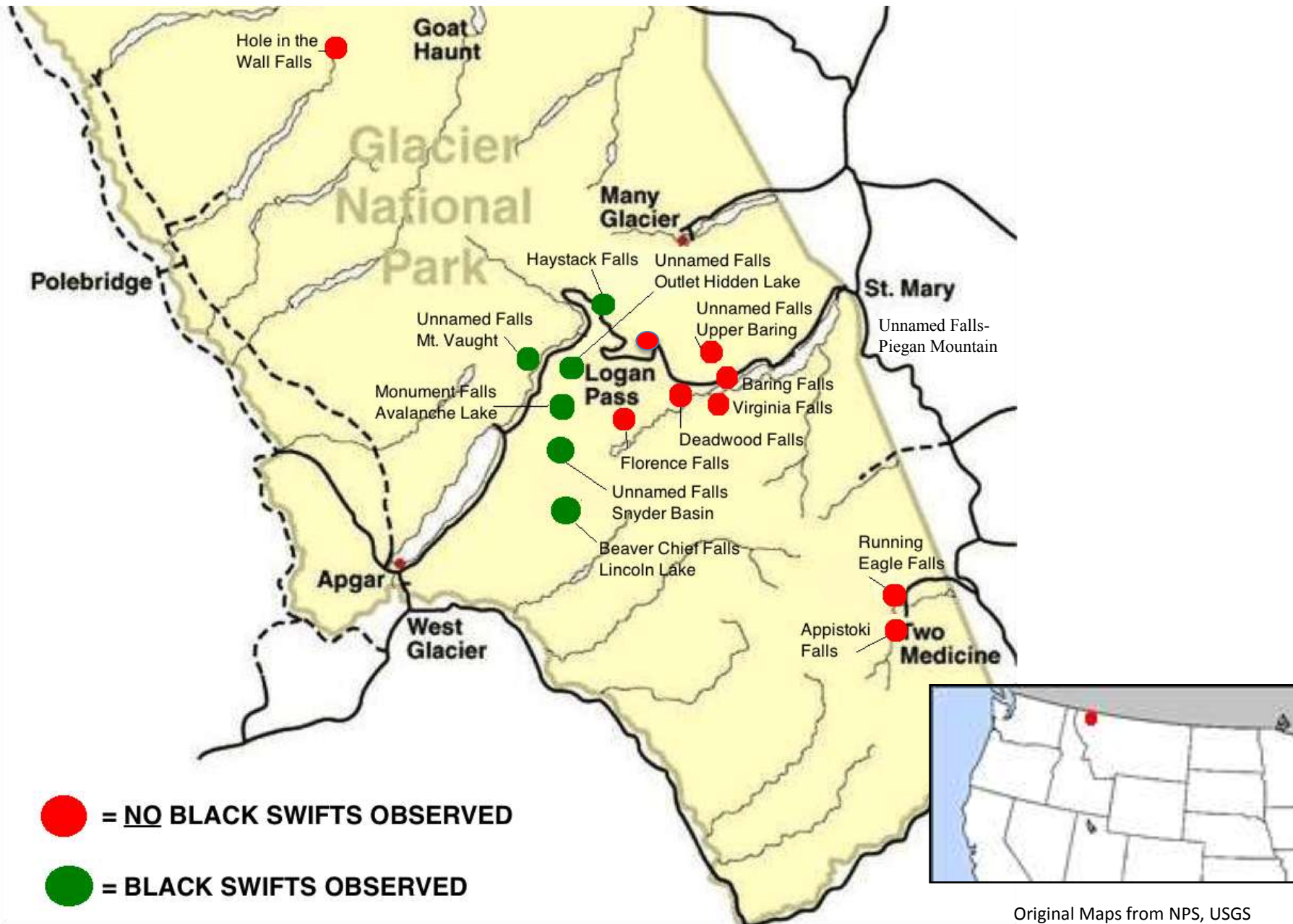
Black Swifts Observed

Haystack Falls (previously known nests)
Monument Falls- Avalanche Lake basin
Mt. Vaught Unnamed Falls
Beaver Chief Falls- Lincoln Lake
Outlet Hidden Lake Unnamed Falls
Snyder Lake- Unnamed Falls

No Black Swifts Observed

Appistoki Falls
Baring Creek Falls
Upper Baring Creek-Unnamed Falls
Deadwood Falls
Florence Falls
Hole in the Wall Falls
Piegan Mountain-Unnamed Falls
Running Eagle Falls
Virginia Falls

MAP OF GNP WATERFALLS SURVEYED - 2013



BLSW Observed: Monument Falls Avalanche Lake Basin



Eastern Most
Waterfall



DESCRIPTION

- Basin with numerous falls: 4 significant falls
- 2 Largest Falls on East Side
- Each 600 ft Falls horsetail/plunge
- Elevation (top of falls) 6490 ft

OBSERVATION

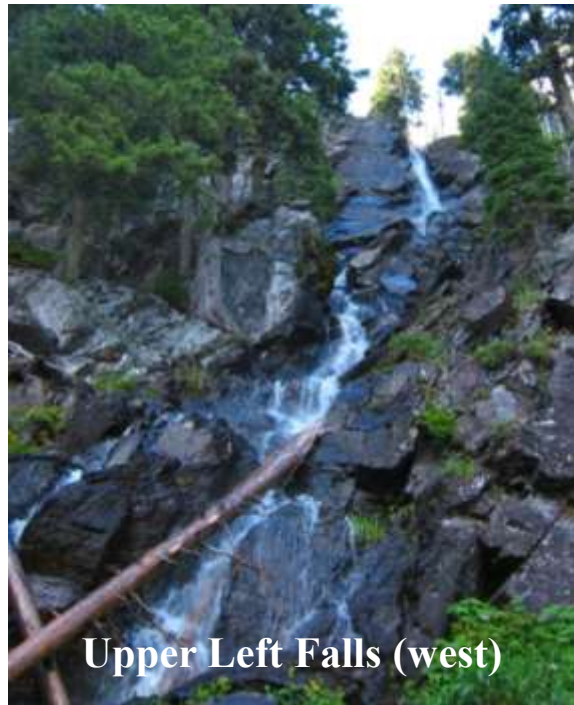
August 5, 2013

Numerous Vaux swifts feeding above lake. We believe we may have seen Black Swifts, one of which was in close proximity to the Eastern most falls.

August 15, 2013

We observed at least 1 Black Swift in the basin again close to the Eastern most falls. We also observed + 20 Vaux Swifts feeding in area, including the upper basin.

BLSW Observed : Unnamed Falls Mount Vaught



Upper Left Falls (west)



Upper Right Falls (east)



Location of Upper Falls as seen from Going to the Sun Road

DESCRIPTION

- 150 ft Falls horsetail with 30 ft plunge at top
- Elevation (top of falls) 5515 ft

HISTORIC NESTING SITE

Black Swifts found nesting behind an unnamed falls at/or near this location on July 24, 1962 (Hunter and Baldwin 1972)

OBSERVATION

August 6, 2013: 1800-2200

18:15 1 BLSW flying out of upper plunge

19:25 1 BLSW flying out of upper plunge

20:30 1 BLSW flying in

20:45 1 BLSW flying out

21:21 1 BLSW flying in

21:28 1 BLSW flying out

21:34 1 BLSW flying out

We observed a black swift enter and exit the same location, behind the upper plunge of Upper Left Falls, 7 times over the course of four hours. We saw no more than 1 black swift at a time. However given the pattern we believe we were observing two swifts. No nest or whitewash was visible.

BLSW Observed : Unnamed Falls Mount Vaught



Location Black Swift
was seen entering
and exiting falls

Upper Left Falls (west)

BLSW Observed : Beaver Chief Falls Lincoln Lake



DESCRIPTION

- 1150 ft Falls plunge/horsetail/fan
- Elevation (top of falls) 5650 ft

OBSERVATION

August 14, 2013 1900- 2100

20:39 1 BLSW flying out of upper plunge

20:53 2 BLSW above lake flying towards upper part of falls

We observed 3 Black Swifts, no more than 2 simultaneously, in the vicinity of the falls. One of these sightings, a single bird, was seen exiting the largest plunge in the upper third of the waterfall.

BLSW Observed : Beaver Chief Falls Lincoln Lake



Area of falls Black Swift seen exiting

BLSW Observed: Hidden Lake Outlet



Upper Falls- top half



Upper Falls bottom half

DESCRIPTION

- 200 ft Falls horsetail/ plunge
- Elevation (top of falls) 6225 ft

OBSERVATION

August 21, 2013 1745-2050

20:40 3 BLSW close proximity to falls

We observed 3 Black Swifts fly in from Hidden Lake vicinity and disappear in close proximity to bottom half of the upper falls.

BLSW Observed : Unnamed Falls Snyder Lake Basin



DESCRIPTION

- Two distinct 800 ft Falls horsetail/ plunge
- Elevation (top of falls) 6225 ft

OBSERVATION

August 27, 2013 1800-2015

19:27 1 BLSW flew out of falls area

19:46 1 BLSW circling above lake

19:47 3 BLSW circling in basin

BLSW Not Observed



Appistoki Falls



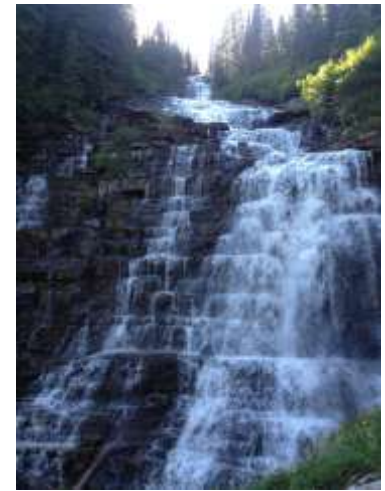
Upper Baring-Unnamed Falls



Baring Falls



Deadwood Falls



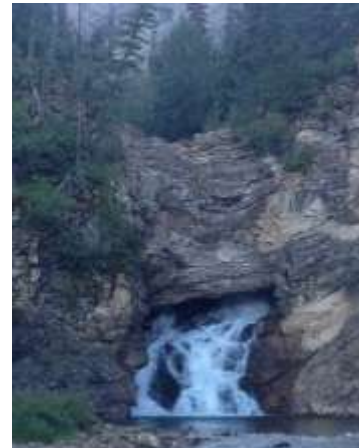
Florence Falls



Hole in the Wall Falls



Unnamed Falls-Piegan Mtn



Running Eagle Falls



Virigina Falls

Hunter, W. F., and P. H. Baldwin. 1962. Nesting of the Black Swift in Montana. *Wilson Bulletin* 74:409-416.